

Stratum Lot
4

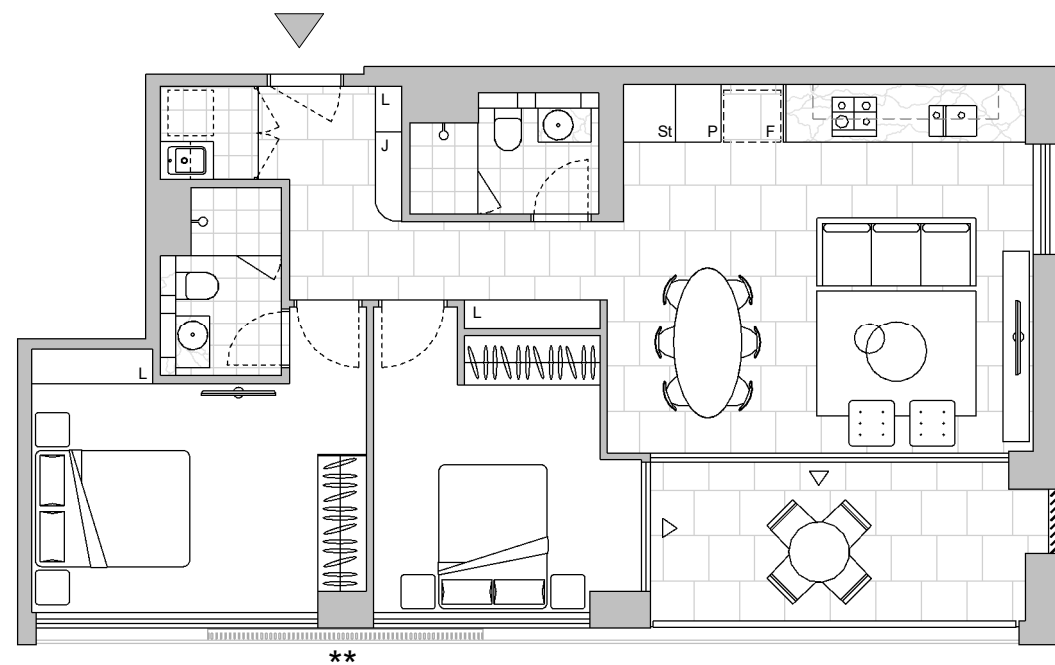
Strata Lot
18

Colour Scheme: Premium B
Floor Finish: Tiles

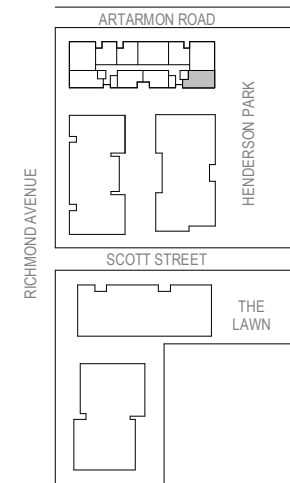
TWO BEDROOM APARTMENT

Unit Area 73 m²
Balcony Area 10 m²
Total Area 83 m²

Areas subject to final survey. Area includes balcony, winter garden and courtyard where applicable. Area excludes associated parking and external storage areas.



LEVEL 5



Legend - As Applicable

- | | | |
|-------------------|-------------|------------|
| ▲ Access | F Fridge | J Joinery |
| △ Balcony Access | P Pantry | L Linen |
| ** Sliding Screen | O Wall Oven | St Storage |
| * Fixed Screen | | |



This floor plan was produced prior to construction and while the information contained herein is believed to be correct it is not guaranteed. Changes will undoubtedly be made in accordance with the contract for sale. The plan does not show additional features such as hot water systems, services, or Bulkheads necessary for services. Dimensions, areas, and scale of floor plans are approximate only and subject to the terms of the Contract. Areas calculated in accordance with the Strata Schemes Development Act 2015. The furniture and furnishings depicted are not included with any sale. Purchasers must refer to the contract for sale for the list of inclusions. Furnishings should not be taken to indicate the final position of power points, TV connection points and the like. All graphics, including design and extent of tile/paver/carpet areas, landscaping, balustrades, louvres, sun shading devices, privacy screens and services equipment are for illustrative purposes only and are not to be relied on as a representative of the final product. Plans do not show additional features within each lot such as letterboxes and side and rear retaining walls. All level changes in the courtyards may not have been shown.

Stratum Lot
4

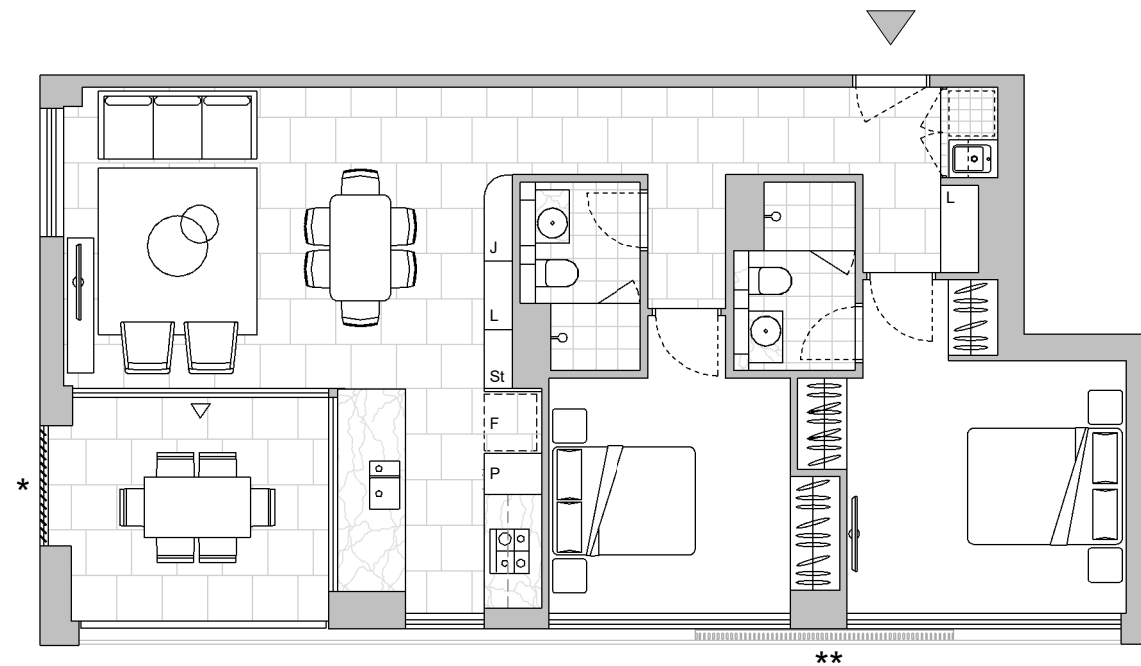
Strata Lot
21

Colour Scheme: Premium C
Floor Finish: Tiles

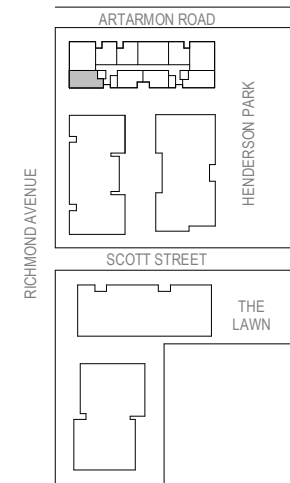
TWO BEDROOM APARTMENT

Unit Area 79 m²
Balcony Area 10 m²
Total Area 89 m²

Areas subject to final survey. Area includes balcony, winter garden and courtyard where applicable. Area excludes associated parking and external storage areas.

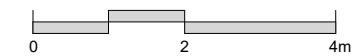


LEVEL 5



Legend - As Applicable

- | | | |
|-------------------|-------------|------------|
| ▲ Access | F Fridge | J Joinery |
| △ Balcony Access | P Pantry | L Linen |
| ** Sliding Screen | O Wall Oven | St Storage |
| * Fixed Screen | | |



This floor plan was produced prior to construction and while the information contained herein is believed to be correct it is not guaranteed. Changes will undoubtedly be made in accordance with the contract for sale. The plan does not show additional features such as hot water systems, services, or Bulkheads necessary for services. Dimensions, areas, and scale of floor plans are approximate only and subject to the terms of the Contract. Areas calculated in accordance with the Strata Schemes Development Act 2015. The furniture and furnishings depicted are not included with any sale. Purchasers must refer to the contract for sale for the list of inclusions. Furnishings should not be taken to indicate the final position of power points, TV connection points and the like. All graphics, including design and extent of tile/paver/carpet areas, landscaping, balustrades, louvres, sun shading devices, privacy screens and services equipment are for illustrative purposes only and are not to be relied on as a representative of the final product. Plans do not show additional features within each lot such as letterboxes and side and rear retaining walls. All level changes in the courtyards may not have been shown.

Stratum Lot
4

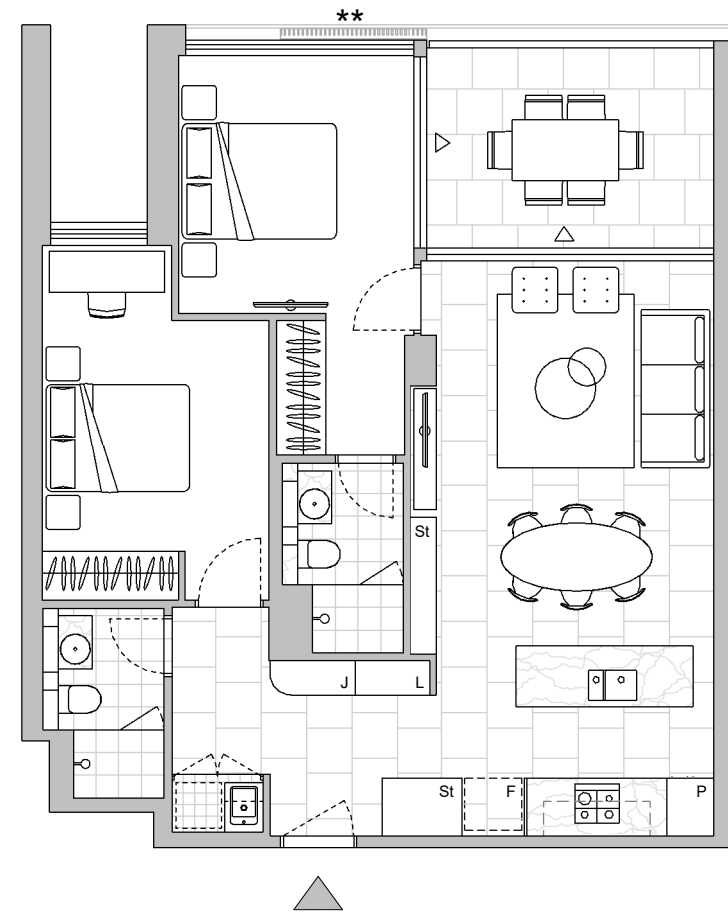
Strata Lot
23

Colour Scheme: Premium C
Floor Finish: Tiles

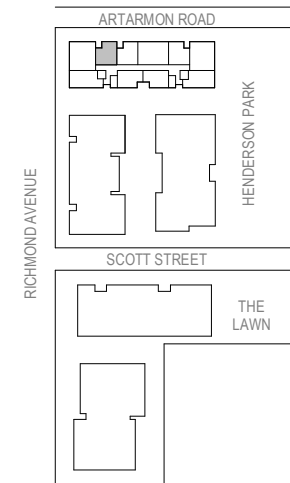
TWO BEDROOM APARTMENT

Unit Area 74 m²
Balcony Area 10 m²
Total Area 84 m²

Areas subject to final survey. Area includes balcony, winter garden and courtyard where applicable. Area excludes associated parking and external storage areas.

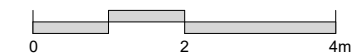


LEVEL 5



Legend - As Applicable

- | | | |
|-------------------|-------------|------------|
| ▲ Access | F Fridge | J Joinery |
| △ Balcony Access | P Pantry | L Linen |
| ** Sliding Screen | O Wall Oven | St Storage |
| * Fixed Screen | | |



This floor plan was produced prior to construction and while the information contained herein is believed to be correct it is not guaranteed. Changes will undoubtedly be made in accordance with the contract for sale. The plan does not show additional features such as hot water systems, services, or Bulkheads necessary for services. Dimensions, areas, and scale of floor plans are approximate only and subject to the terms of the Contract. Areas calculated in accordance with the Strata Schemes Development Act 2015. The furniture and furnishings depicted are not included with any sale. Purchasers must refer to the contract for sale for the list of inclusions. Furnishings should not be taken to indicate the final position of power points, TV connection points and the like. All graphics, including design and extent of tile/paver/carpet areas, landscaping, balustrades, louvres, sun shading devices, privacy screens and services equipment are for illustrative purposes only and are not to be relied on as a representative of the final product. Plans do not show additional features within each lot such as letterboxes and side and rear retaining walls. All level changes in the courtyards may not have been shown.

Stratum Lot
4

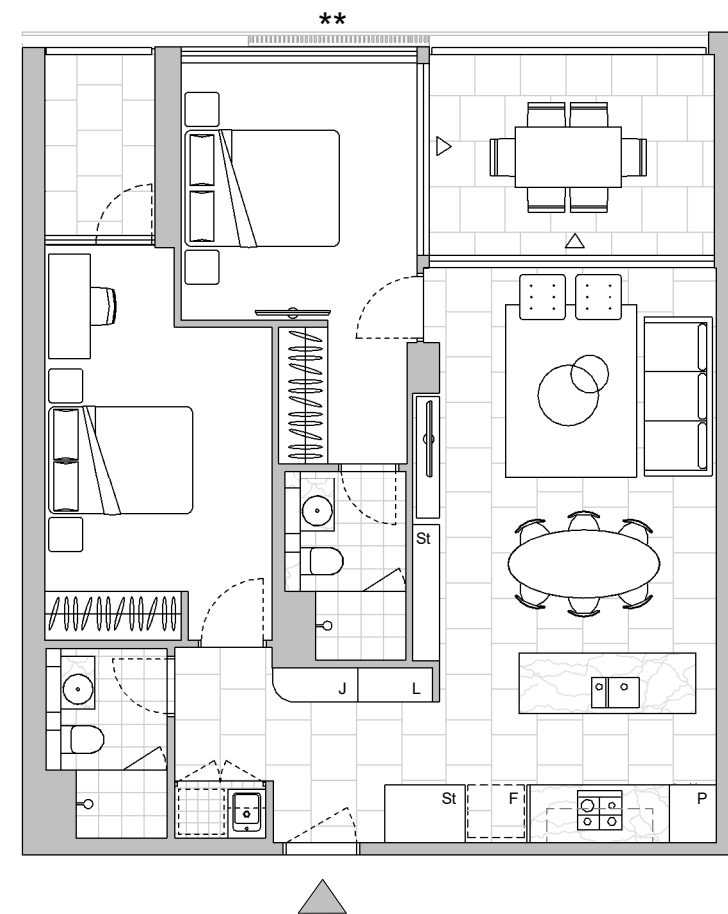
Strata Lot
24

Colour Scheme: Premium A
Floor Finish: Tiles

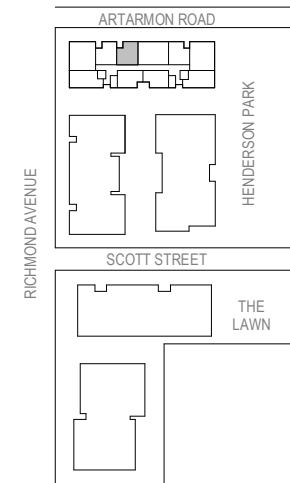
TWO BEDROOM APARTMENT

Unit Area 75 m²
Balcony Area 13 m²
Total Area 88 m²

Areas subject to final survey. Area includes balcony, winter garden and courtyard where applicable. Area excludes associated parking and external storage areas.

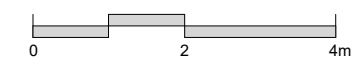


LEVEL 5

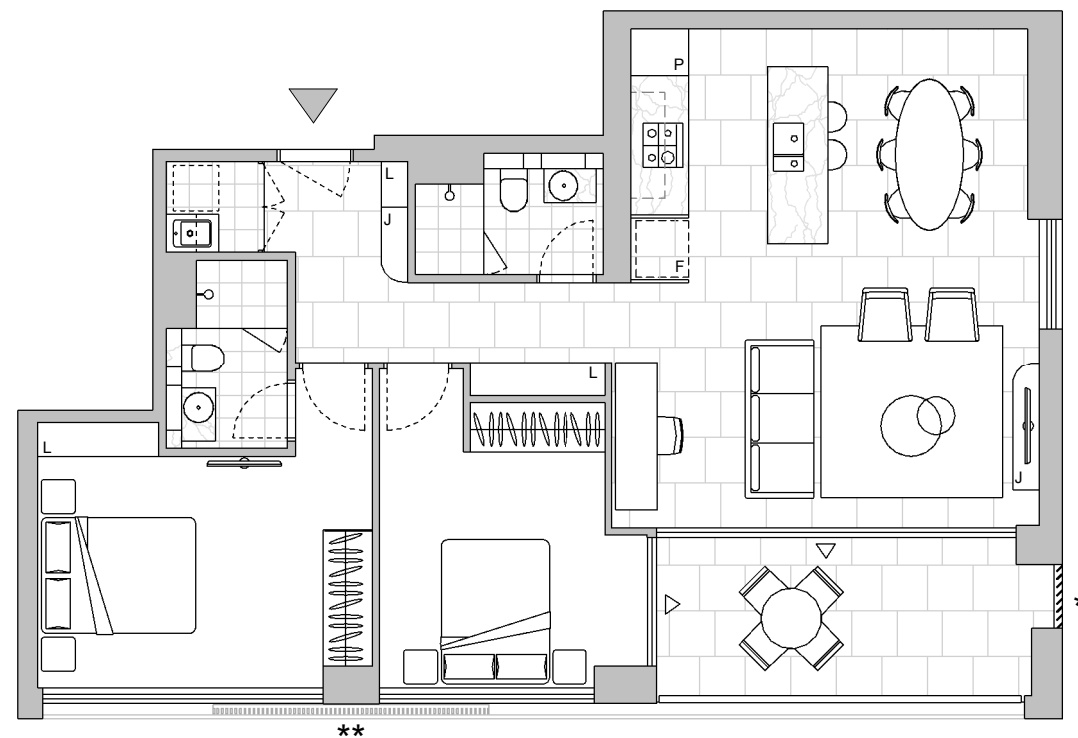


Legend - As Applicable

- | | | |
|-------------------|-------------|------------|
| ▲ Access | F Fridge | J Joinery |
| △ Balcony Access | P Pantry | L Linen |
| ** Sliding Screen | O Wall Oven | St Storage |
| * Fixed Screen | | |



This floor plan was produced prior to construction and while the information contained herein is believed to be correct it is not guaranteed. Changes will undoubtedly be made in accordance with the contract for sale. The plan does not show additional features such as hot water systems, services, or Bulkheads necessary for services. Dimensions, areas, and scale of floor plans are approximate only and subject to the terms of the Contract. Areas calculated in accordance with the Strata Schemes Development Act 2015. The furniture and furnishings depicted are not included with any sale. Purchasers must refer to the contract for sale for the list of inclusions. Furnishings should not be taken to indicate the final position of power points, TV connection points and the like. All graphics, including design and extent of tile/paver/carpet areas, landscaping, balustrades, louvres, sun shading devices, privacy screens and services equipment are for illustrative purposes only and are not to be relied on as a representative of the final product. Plans do not show additional features within each lot such as letterboxes and side and rear retaining walls. All level changes in the courtyards may not have been shown.



LEVEL 3

Stratum Lot
4

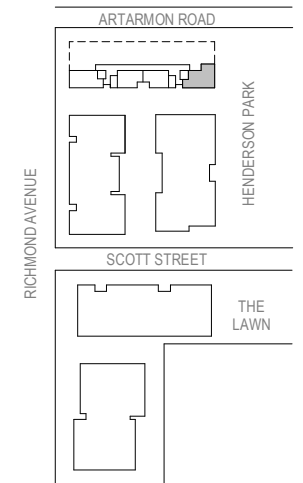
Strata Lot
1

Colour Scheme: Premium A
Floor Finish: Tiles

TWO BEDROOM APARTMENT

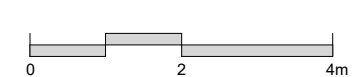
Unit Area 83 m²
Balcony Area 11 m²
Total Area 94 m²

Areas subject to final survey. Area includes balcony, winter garden and courtyard where applicable. Area excludes associated parking and external storage areas.



Legend - As Applicable

- | | | |
|-------------------|-------------|------------|
| ▲ Access | F Fridge | J Joinery |
| △ Balcony Access | P Pantry | L Linen |
| ** Sliding Screen | O Wall Oven | St Storage |
| * Fixed Screen | | |



This floor plan was produced prior to construction and while the information contained herein is believed to be correct it is not guaranteed. Changes will undoubtedly be made in accordance with the contract for sale. The plan does not show additional features such as hot water systems, services, or Bulkheads necessary for services. Dimensions, areas, and scale of floor plans are approximate only and subject to the terms of the Contract. Areas calculated in accordance with the Strata Schemes Development Act 2015. The furniture and furnishings depicted are not included with any sale. Purchasers must refer to the contract for sale for the list of inclusions. Furnishings should not be taken to indicate the final position of power points, TV connection points and the like. All graphics, including design and extent of tile/paver/carpet areas, landscaping, balustrades, louvres, sun shading devices, privacy screens and services equipment are for illustrative purposes only and are not to be relied on as a representative of the final product. Plans do not show additional features within each lot such as letterboxes and side and rear retaining walls. All level changes in the courtyards may not have been shown.

Stratum Lot
4

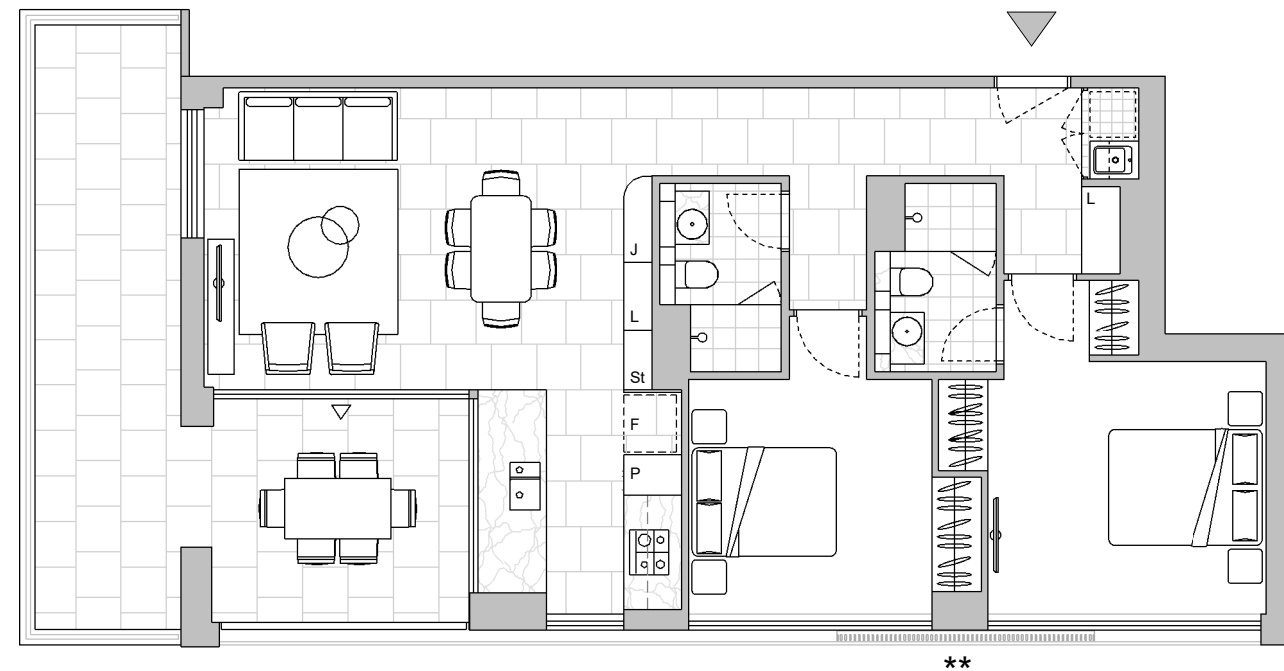
Strata Lot
4

Colour Scheme: Premium A
Floor Finish: Tiles

TWO BEDROOM APARTMENT

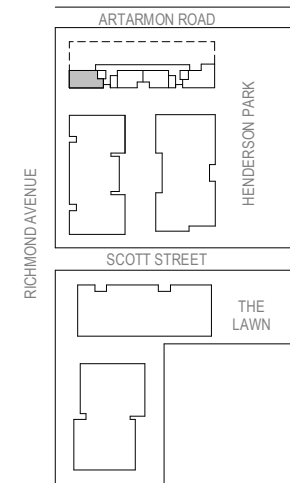
Unit Area 79 m²
Balcony Area 26 m²
Total Area 105 m²

Areas subject to final survey. Area includes balcony, winter garden and courtyard where applicable. Area excludes associated parking and external storage areas.



**

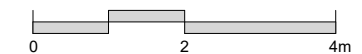
LEVEL 3



Legend - As Applicable

- | | | |
|-------------------|-------------|------------|
| ▲ Access | F Fridge | J Joinery |
| △ Balcony Access | P Pantry | L Linen |
| ** Sliding Screen | O Wall Oven | St Storage |
| * Fixed Screen | | |

Provision of a water point, GPO (power point) and gas point has been made available to the balcony.



This floor plan was produced prior to construction and while the information contained herein is believed to be correct it is not guaranteed. Changes will undoubtedly be made in accordance with the contract for sale. The plan does not show additional features such as hot water systems, services, or Bulkheads necessary for services. Dimensions, areas, and scale of floor plans are approximate only and subject to the terms of the Contract. Areas calculated in accordance with the Strata Schemes Development Act 2015. The furniture and furnishings depicted are not included with any sale. Purchasers must refer to the contract for sale for the list of inclusions. Furnishings should not be taken to indicate the final position of power points, TV connection points and the like. All graphics, including design and extent of tile/paver/carpet areas, landscaping, balustrades, louvres, sun shading devices, privacy screens and services equipment are for illustrative purposes only and are not to be relied on as a representative of the final product. Plans do not show additional features within each lot such as letterboxes and side and rear retaining walls. All level changes in the courtyards may not have been shown.

Stratum Lot
4

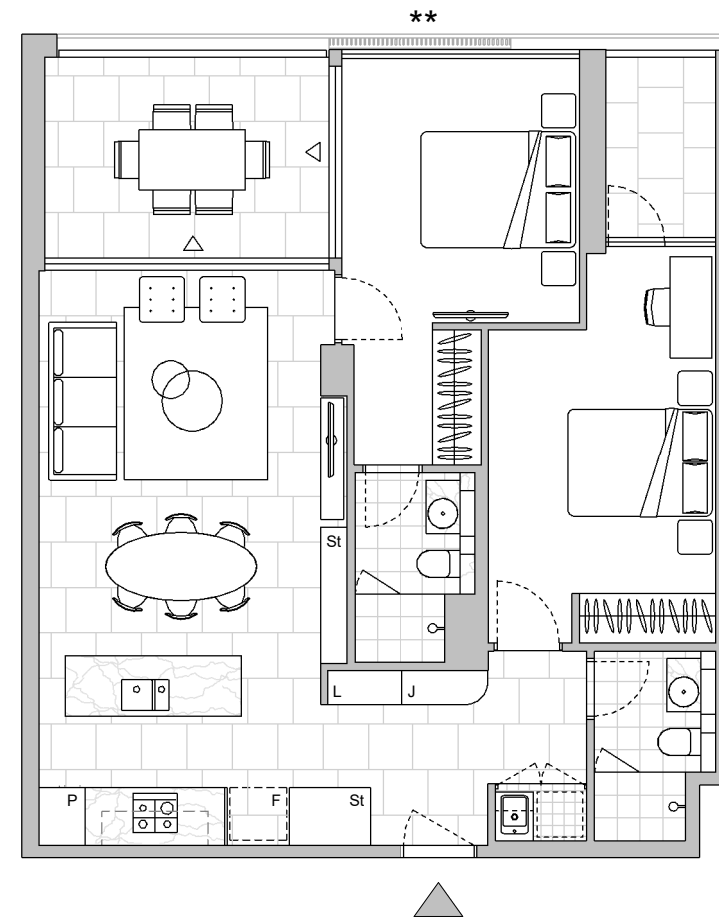
Strata Lot
5

Colour Scheme: Premium B
Floor Finish: Tiles

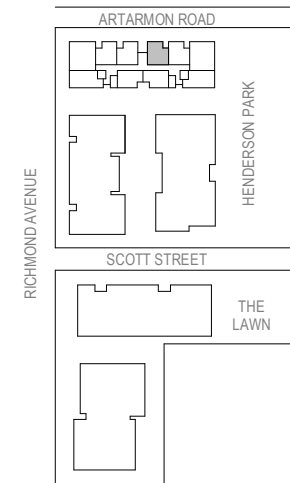
TWO BEDROOM APARTMENT

Unit Area 76 m²
Balcony Area 13 m²
Total Area 89 m²

Areas subject to final survey. Area includes balcony, winter garden and courtyard where applicable. Area excludes associated parking and external storage areas.

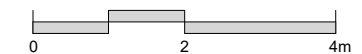


LEVEL 4



Legend - As Applicable

- | | | |
|-------------------|-------------|------------|
| ▲ Access | F Fridge | J Joinery |
| △ Balcony Access | P Pantry | L Linen |
| ** Sliding Screen | O Wall Oven | St Storage |
| * Fixed Screen | | |



This floor plan was produced prior to construction and while the information contained herein is believed to be correct it is not guaranteed. Changes will undoubtedly be made in accordance with the contract for sale. The plan does not show additional features such as hot water systems, services, or Bulkheads necessary for services. Dimensions, areas, and scale of floor plans are approximate only and subject to the terms of the Contract. Areas calculated in accordance with the Strata Schemes Development Act 2015. The furniture and furnishings depicted are not included with any sale. Purchasers must refer to the contract for sale for the list of inclusions. Furnishings should not be taken to indicate the final position of power points, TV connection points and the like. All graphics, including design and extent of tile/paver/carpet areas, landscaping, balustrades, louvres, sun shading devices, privacy screens and services equipment are for illustrative purposes only and are not to be relied on as a representative of the final product. Plans do not show additional features within each lot such as letterboxes and side and rear retaining walls. All level changes in the courtyards may not have been shown.

Stratum Lot
4

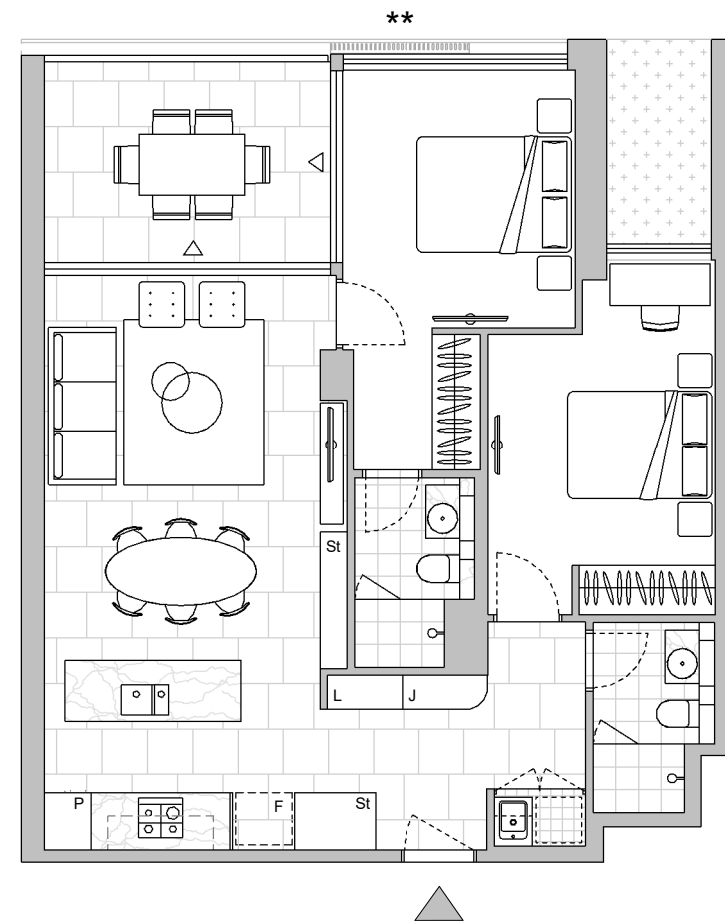
Strata Lot
6

Colour Scheme: Premium A
Floor Finish: Tiles

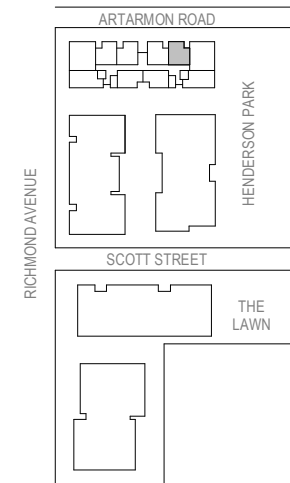
TWO BEDROOM APARTMENT

Unit Area 74 m²
Balcony Area 10 m²
Total Area 84 m²

Areas subject to final survey. Area includes balcony, winter garden and courtyard where applicable. Area excludes associated parking and external storage areas.

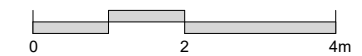


LEVEL 4



Legend - As Applicable

- | | | |
|-------------------|-------------|------------|
| ▲ Access | F Fridge | J Joinery |
| △ Balcony Access | P Pantry | L Linen |
| ** Sliding Screen | O Wall Oven | St Storage |
| * Fixed Screen | Grass | |



This floor plan was produced prior to construction and while the information contained herein is believed to be correct it is not guaranteed. Changes will undoubtedly be made in accordance with the contract for sale. The plan does not show additional features such as hot water systems, services, or Bulkheads necessary for services. Dimensions, areas, and scale of floor plans are approximate only and subject to the terms of the Contract. Areas calculated in accordance with the Strata Schemes Development Act 2015. The furniture and furnishings depicted are not included with any sale. Purchasers must refer to the contract for sale for the list of inclusions. Furnishings should not be taken to indicate the final position of power points, TV connection points and the like. All graphics, including design and extent of tile/paver/carpet areas, landscaping, balustrades, louvres, sun shading devices, privacy screens and services equipment are for illustrative purposes only and are not to be relied on as a representative of the final product. Plans do not show additional features within each lot such as letterboxes and side and rear retaining walls. All level changes in the courtyards may not have been shown.

Stratum Lot
4

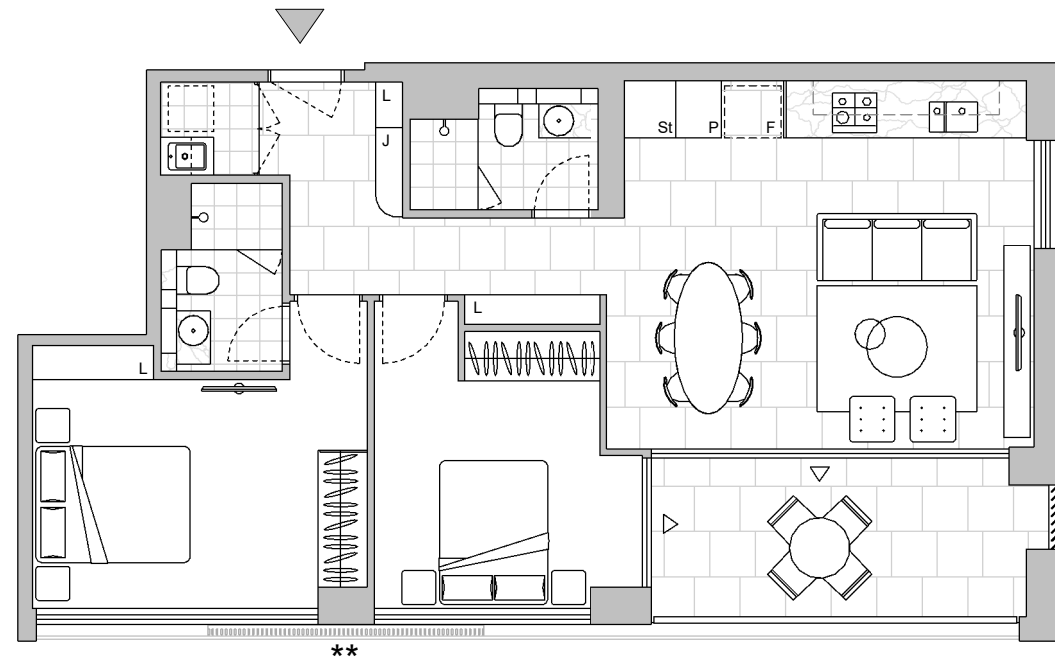
Strata Lot
8

Colour Scheme: Premium A
Floor Finish: Tiles

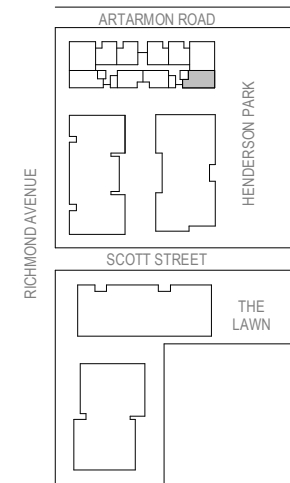
TWO BEDROOM APARTMENT

Unit Area 73 m²
Balcony Area 10 m²
Total Area 83 m²

Areas subject to final survey. Area includes balcony, winter garden and courtyard where applicable. Area excludes associated parking and external storage areas.

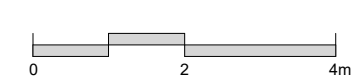


LEVEL 4



Legend - As Applicable

- | | | |
|-------------------|-------------|------------|
| ▲ Access | F Fridge | J Joinery |
| △ Balcony Access | P Pantry | L Linen |
| ** Sliding Screen | O Wall Oven | St Storage |
| * Fixed Screen | | |



This floor plan was produced prior to construction and while the information contained herein is believed to be correct it is not guaranteed. Changes will undoubtedly be made in accordance with the contract for sale. The plan does not show additional features such as hot water systems, services, or Bulkheads necessary for services. Dimensions, areas, and scale of floor plans are approximate only and subject to the terms of the Contract. Areas calculated in accordance with the Strata Schemes Development Act 2015. The furniture and furnishings depicted are not included with any sale. Purchasers must refer to the contract for sale for the list of inclusions. Furnishings should not be taken to indicate the final position of power points, TV connection points and the like. All graphics, including design and extent of tile/paver/carpet areas, landscaping, balustrades, louvres, sun shading devices, privacy screens and services equipment are for illustrative purposes only and are not to be relied on as a representative of the final product. Plans do not show additional features within each lot such as letterboxes and side and rear retaining walls. All level changes in the courtyards may not have been shown.

Stratum Lot
4

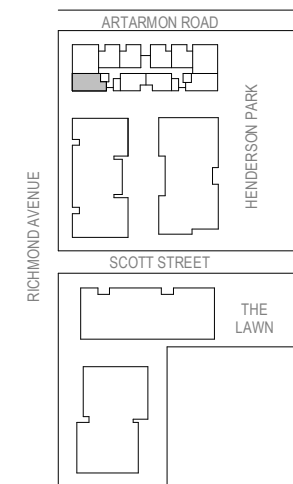
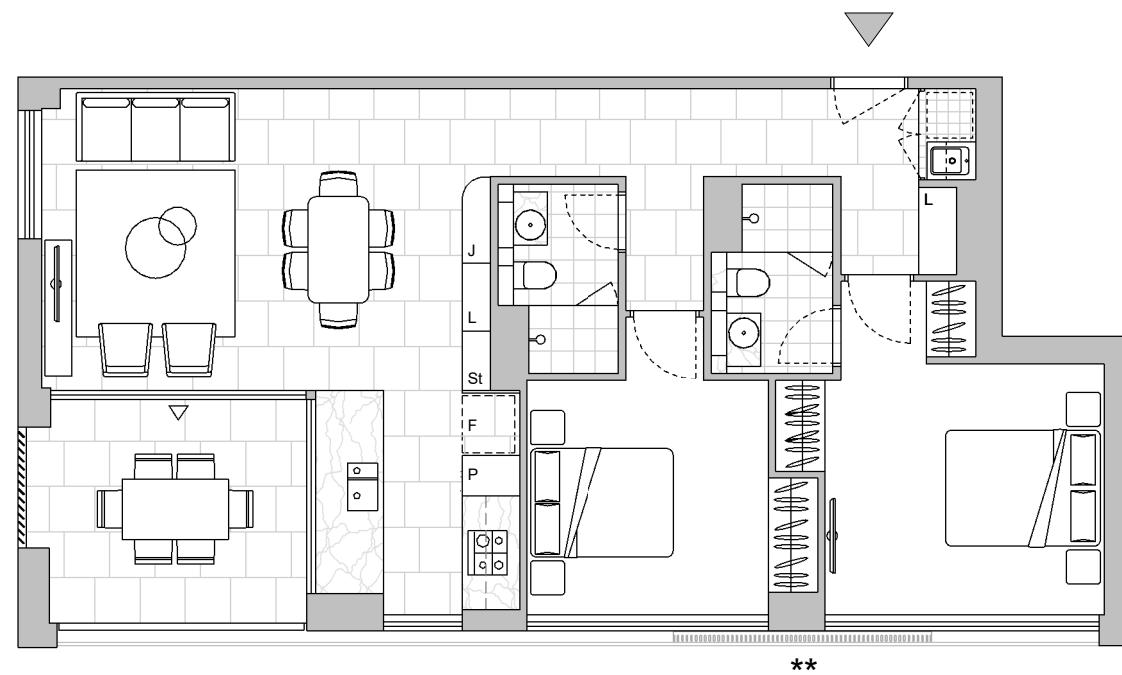
Strata Lot
11

Colour Scheme: Premium B
Floor Finish: Tiles

TWO BEDROOM APARTMENT

Unit Area 79 m²
Balcony Area 10 m²
Total Area 89 m²

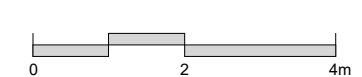
Areas subject to final survey. Area includes balcony, winter garden and courtyard where applicable. Area excludes associated parking and external storage areas.



Legend - As Applicable

- | | | |
|-------------------|-------------|------------|
| ▲ Access | F Fridge | J Joinery |
| △ Balcony Access | P Pantry | L Linen |
| ** Sliding Screen | O Wall Oven | St Storage |
| * Fixed Screen | | |

LEVEL 4



This floor plan was produced prior to construction and while the information contained herein is believed to be correct it is not guaranteed. Changes will undoubtedly be made in accordance with the contract for sale. The plan does not show additional features such as hot water systems, services, or Bulkheads necessary for services. Dimensions, areas, and scale of floor plans are approximate only and subject to the terms of the Contract. Areas calculated in accordance with the Strata Schemes Development Act 2015. The furniture and furnishings depicted are not included with any sale. Purchasers must refer to the contract for sale for the list of inclusions. Furnishings should not be taken to indicate the final position of power points, TV connection points and the like. All graphics, including design and extent of tile/paver/carpet areas, landscaping, balustrades, louvres, sun shading devices, privacy screens and services equipment are for illustrative purposes only and are not to be relied on as a representative of the final product. Plans do not show additional features within each lot such as letterboxes and side and rear retaining walls. All level changes in the courtyards may not have been shown.

Stratum Lot
4

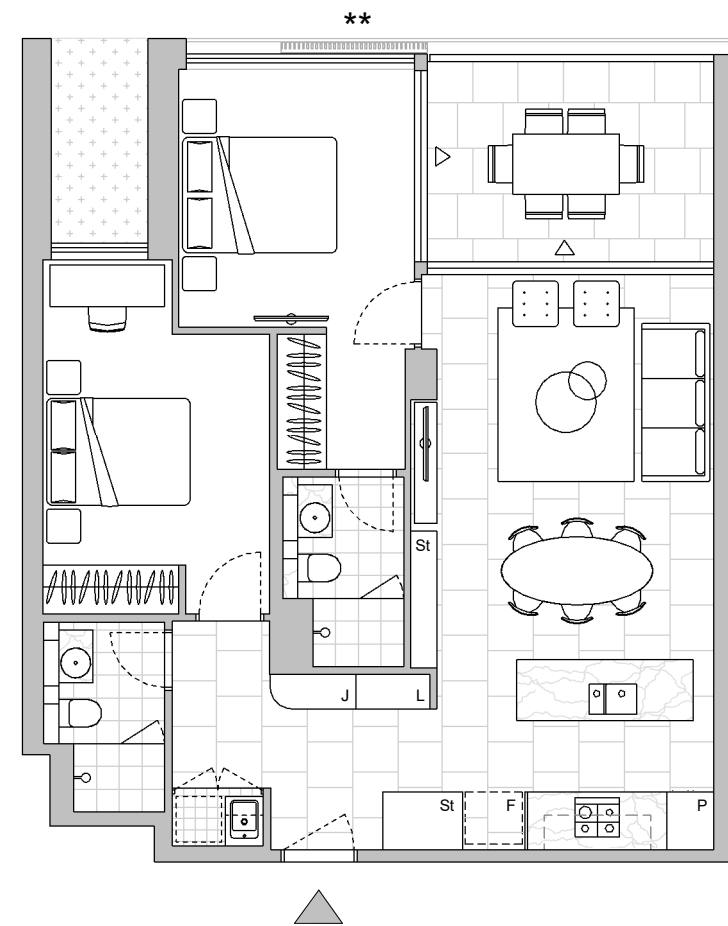
Strata Lot
13

Colour Scheme: Premium A
Floor Finish: Tiles

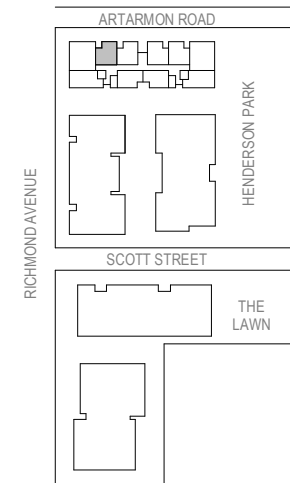
TWO BEDROOM APARTMENT

Unit Area 74 m²
Balcony Area 10 m²
Total Area 84 m²

Areas subject to final survey. Area includes balcony, winter garden and courtyard where applicable. Area excludes associated parking and external storage areas.

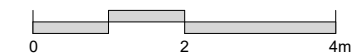


LEVEL 4



Legend - As Applicable

- | | | |
|-------------------|-------------|------------|
| ▲ Access | F Fridge | J Joinery |
| △ Balcony Access | P Pantry | L Linen |
| ** Sliding Screen | O Wall Oven | St Storage |
| * Fixed Screen | Grass | |



This floor plan was produced prior to construction and while the information contained herein is believed to be correct it is not guaranteed. Changes will undoubtedly be made in accordance with the contract for sale. The plan does not show additional features such as hot water systems, services, or Bulkheads necessary for services. Dimensions, areas, and scale of floor plans are approximate only and subject to the terms of the Contract. Areas calculated in accordance with the Strata Schemes Development Act 2015. The furniture and furnishings depicted are not included with any sale. Purchasers must refer to the contract for sale for the list of inclusions. Furnishings should not be taken to indicate the final position of power points, TV connection points and the like. All graphics, including design and extent of tile/paver/carpet areas, landscaping, balustrades, louvres, sun shading devices, privacy screens and services equipment are for illustrative purposes only and are not to be relied on as a representative of the final product. Plans do not show additional features within each lot such as letterboxes and side and rear retaining walls. All level changes in the courtyards may not have been shown.

Stratum Lot
4

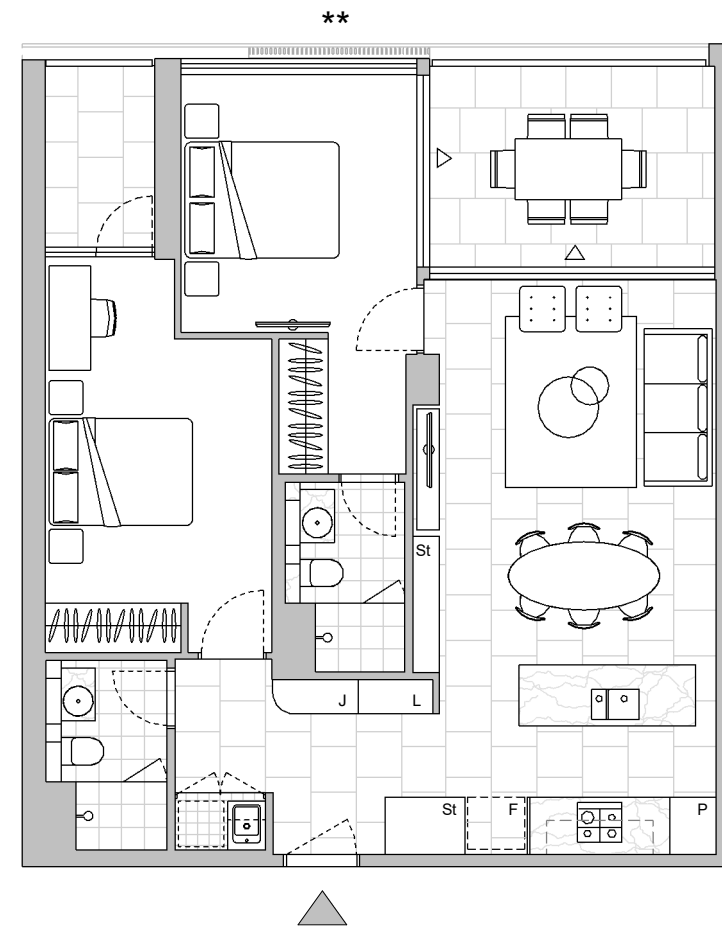
Strata Lot
14

Colour Scheme: Premium B
Floor Finish: Tiles

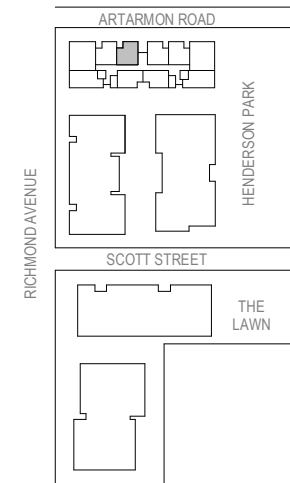
TWO BEDROOM APARTMENT

Unit Area 75 m²
Balcony Area 13 m²
Total Area 88 m²

Areas subject to final survey. Area includes balcony, winter garden and courtyard where applicable. Area excludes associated parking and external storage areas.

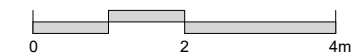


LEVEL 4



Legend - As Applicable

- | | | |
|-------------------|-------------|------------|
| ▲ Access | F Fridge | J Joinery |
| △ Balcony Access | P Pantry | L Linen |
| ** Sliding Screen | O Wall Oven | St Storage |
| * Fixed Screen | | |



This floor plan was produced prior to construction and while the information contained herein is believed to be correct it is not guaranteed. Changes will undoubtedly be made in accordance with the contract for sale. The plan does not show additional features such as hot water systems, services, or Bulkheads necessary for services. Dimensions, areas, and scale of floor plans are approximate only and subject to the terms of the Contract. Areas calculated in accordance with the Strata Schemes Development Act 2015. The furniture and furnishings depicted are not included with any sale. Purchasers must refer to the contract for sale for the list of inclusions. Furnishings should not be taken to indicate the final position of power points, TV connection points and the like. All graphics, including design and extent of tile/paver/carpet areas, landscaping, balustrades, louvres, sun shading devices, privacy screens and services equipment are for illustrative purposes only and are not to be relied on as a representative of the final product. Plans do not show additional features within each lot such as letterboxes and side and rear retaining walls. All level changes in the courtyards may not have been shown.

Stratum Lot
4

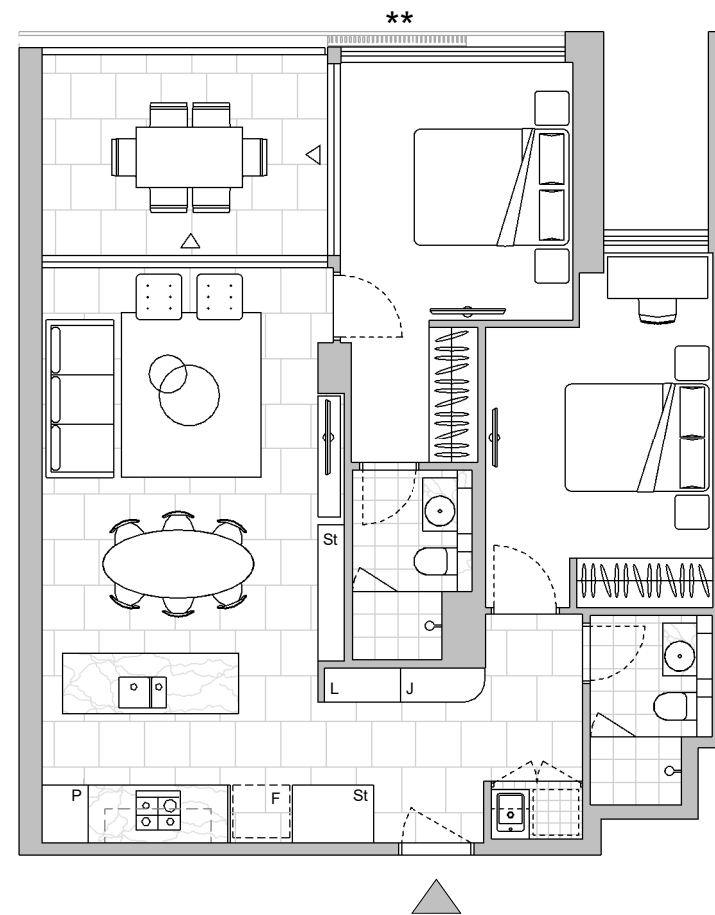
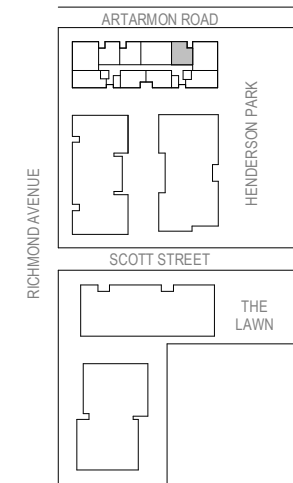
Strata Lot
16

Colour Scheme: Premium C
Floor Finish: Tiles

TWO BEDROOM APARTMENT

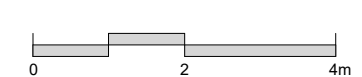
Unit Area 74 m²
Balcony Area 10 m²
Total Area 84 m²

Areas subject to final survey. Area includes balcony, winter garden and courtyard where applicable. Area excludes associated parking and external storage areas.



Legend - As Applicable

- | | | |
|-------------------|-------------|------------|
| ▲ Access | F Fridge | J Joinery |
| △ Balcony Access | P Pantry | L Linen |
| ** Sliding Screen | O Wall Oven | St Storage |
| * Fixed Screen | | |



This floor plan was produced prior to construction and while the information contained herein is believed to be correct it is not guaranteed. Changes will undoubtedly be made in accordance with the contract for sale. The plan does not show additional features such as hot water systems, services, or Bulkheads necessary for services. Dimensions, areas, and scale of floor plans are approximate only and subject to the terms of the Contract. Areas calculated in accordance with the Strata Schemes Development Act 2015. The furniture and furnishings depicted are not included with any sale. Purchasers must refer to the contract for sale for the list of inclusions. Furnishings should not be taken to indicate the final position of power points, TV connection points and the like. All graphics, including design and extent of tile/paver/carpet areas, landscaping, balustrades, louvres, sun shading devices, privacy screens and services equipment are for illustrative purposes only and are not to be relied on as a representative of the final product. Plans do not show additional features within each lot such as letterboxes and side and rear retaining walls. All level changes in the courtyards may not have been shown.